



4

BEDROOMS



1

BATHROOM



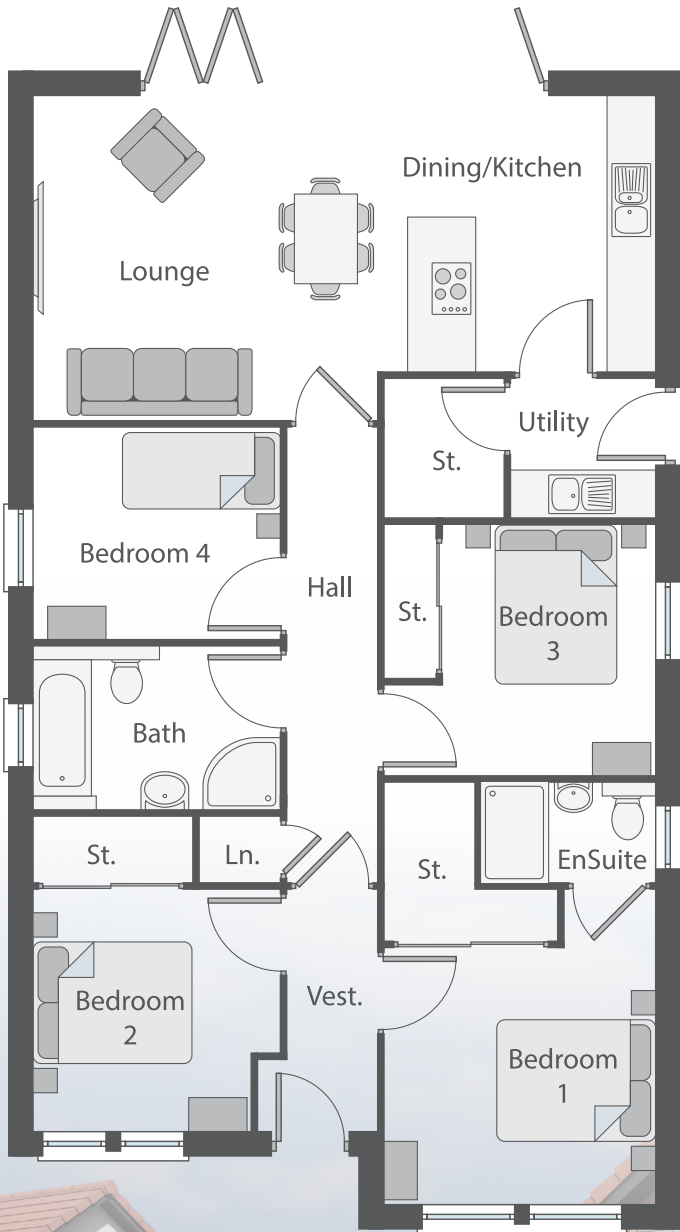
1

ENSUITE



## Shaw

The Shaw is an attractive 4-bedroom bungalow giving larger families ample accommodation in a house that will not fail to impress. With a large master bedroom and en-suite coupled with 3 further double bedrooms and a spacious family bathroom. The well proportioned and impressive modern open plan lounge, kitchen and dining area, with fold and slide doors opening to the rear garden, completes what is an excellent home.



## Ground Floor

Room	Width (Metric)	Depth (Metric)	Width (Imperial)	Depth (Imperial)
Vestibule	1494	2990	4' - 11"	9' - 10"
Bedroom 1	3330	3890	10' - 11"	12' - 9"
En-Suite	2145	1230	7' - 0"	4' - 0"
Bedroom 2	3080	2990	10' - 1"	9' - 10"
Bedroom 3	3330	3100	10' - 11"	10' - 2"
Bedroom 4	3080	2595	10' - 1"	8' - 6"
Utility	1800	1700	5' - 11"	5' - 7"
Kitchen/Dining	3425	3400	11' - 3"	11' - 2"
Lounge	4275	4000	14' - 0"	13' - 1"
Bathroom	3080	2035	10' - 1"	6' - 8"
Hall	1100	5620	3' - 7"	18' - 5"

*All quoted room sizes are approximate structural dimensions and may vary due to normal building tolerances. CGI's are for guidance only.*

